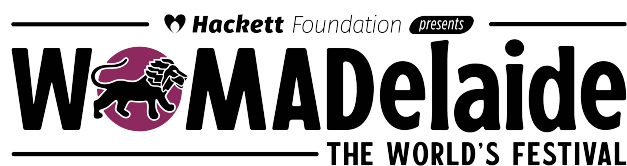


# WOMADelaide Access Guide

6–9 March 2026

Botanic Park / Tainmuntilla, Adelaide, South Australia



## What is an access guide?

In this guide we will show you what to expect when you come to WOMADelaide in March 2026. We provide access information about step-free paths, sensory access and facilities, as well as an overview of the event. This guide was created by Access2Arts in collaboration with WOMADelaide.

More information about the event can be found at:  
<https://www.womadelaide.com.au/>

If you have any other access questions, please contact  
[tickets@womadelaide.com.au](mailto:tickets@womadelaide.com.au).

---

## What is in this Guide?

What is WOMADelaide? – Page 3

Before the event – Page 4

- Buying Tickets
- Concession Tickets
- Companion Card
- Wristbands
- Pre-show information
- What to bring

Getting to the event – Page 8

- Parking and Drop Off
- Parking Maps
- Public Transport
- Cycling
- Entrances
- Bag Check-In

## Getting around – Page 12

- Site overview
- Map
- Wheelchair access
- Ground surfaces
- Paths and lighting
- Asthma
- Sensory information

## Facilities and spaces – Page 16

- Toilets and Changing Facility
  - Facilities
  - Sensory Bus
  - Hidden Disabilities Sunflower
  - Food
  - Bars
  - Stages
  - Access Platforms
  - WoMarkets
  - KidZone
  - Staff and Volunteers
- 

## What is WOMADelaide?

WOMADelaide – World Of Music Arts & Dance - is an open-air festival celebrating cultural discovery in the heart of Adelaide's Botanic Park / Tainmuntilla, 6–9 March 2026.

WOMADelaide, 'the World's Festival', made its debut as an independent major event in 1993, and is now an internationally acclaimed event and pilgrimage for artists and audiences from around the world, hosting artists from 35+ countries.

WOMADelaide offers a variety of activities including live music, dance and theatre, talks and workshops, food and markets.

The fun and family-friendly KidZone is a dedicated space for children, with nature-play activities, stories, singing, dancing and educational entertainment.

---

## **Before the event**

---

### **Buying tickets**

Tickets are available online (<https://www.womadelaide.com.au/tickets>), or at the entrance.

All Box Offices on site are cashless. You will need to pay with a card.

Tickets can be from 1 day up to 4 days, and you can purchase Adult, Concession, Youth or Child tickets.

Children 12 and under can attend for free when purchasing with an Adult ticket, but you must still book a ticket for them.

Some days sell out before the Festival starts, we recommend booking online before you arrive if you can.

---

### **Concession tickets**

You can book a concession-priced ticket if you are any of the following:



- Full-Time Student
- Australian Pension Card holder
- Centrelink Health Care Card holder
- A Department of Veterans Affairs (DVA) cardholder
- YHA member

Please note that you must bring relevant proof of concession as you may be asked to provide this at the gates.

A Seniors Card does NOT entitle you to a concession ticket.

## **Companion card**

WOMADelaide is a participant of the National Companion Card scheme, we make every effort to ensure the festival is accessible to our patrons.

Companion Card holders qualify for concession price tickets and a second ticket at no cost for their companion.

When you arrive at the Festival Box Office present your National Companion Card, our staff will then allocate a corresponding complimentary ticket. There is a limit of one companion ticket issued daily per cardholder.

When attending the Festival for multiple days and retaining the same companion, a multi-day ticket will be issued to your companion.

Although companion card tickets are preferably provided at the box office on arrival, they can be provided ahead of time on a case-by-case basis by emailing [tickets@womadelaide.com.au](mailto:tickets@womadelaide.com.au).

For further information on the Companion Card scheme, please visit <https://www.sa.gov.au/topics/care-and-support/disability/companion-card>.

---

## Wristbands

Your ticket to WOMADelaide is in the form of a wristband which gains entry and exit over the selected festival days.

You CANNOT share your entry ticket.

To ensure comfort, we suggest wearing your wristband on your non-dominant hand. Before securing your wristband, place two fingers between your wrist and the band.

Keep your wristband on. Your wristband must remain on your wrist for the entire time that you attend the Festival, and overnight in between days you attend. If you remove your wristband, you will invalidate it.

To leave and come back, you must scan out and scan in again at the entrances.

---

## Ticketing questions

For all ticket enquiries, please contact [tickets@womadelaide.com.au](mailto:tickets@womadelaide.com.au) or 1300 496 623.

Before the event, the phone room is open Monday to Friday 10am – 4pm each day.

The phone lines can get very busy while the festival is in progress.

The most direct way to solve a ticketing issue during the event is to come to the Box Office at the gate, where staff can help you.

---

## Pre-show information

The lineup shows who is playing at the festival.

As the lineup is announced it will be available on the website and show who is playing when, and on which stage.

WOMADelaide also has an app. It has the map, event info, artist info, set times and reminders.

You can [download the app](#), from Google Play or the App Store.

You can also view the site map on page 13 of this guide or download it [here](#).

---

## What to bring:

The essentials:

- Your wristband! (or your booking reference number/ confirmation email)
- Valid photo ID
- Hat
- Sunscreen
- Medication (especially for asthma, allergies or hayfever as the park can get dusty at times)
- Clothes to suit the weather
- Reusable water bottle

Recommended:

- Portable phone charger
- Sturdy shoes
- Friends
- Sunnies

## **What NOT to bring**

Don't bring:

- Tents
- Large Umbrellas
- Chairs (low chairs okay)
- Glass
- Alcohol
- Professional Cameras (long lenses)

---

## **Getting to the event**

---

### **Parking & Drop-Off**

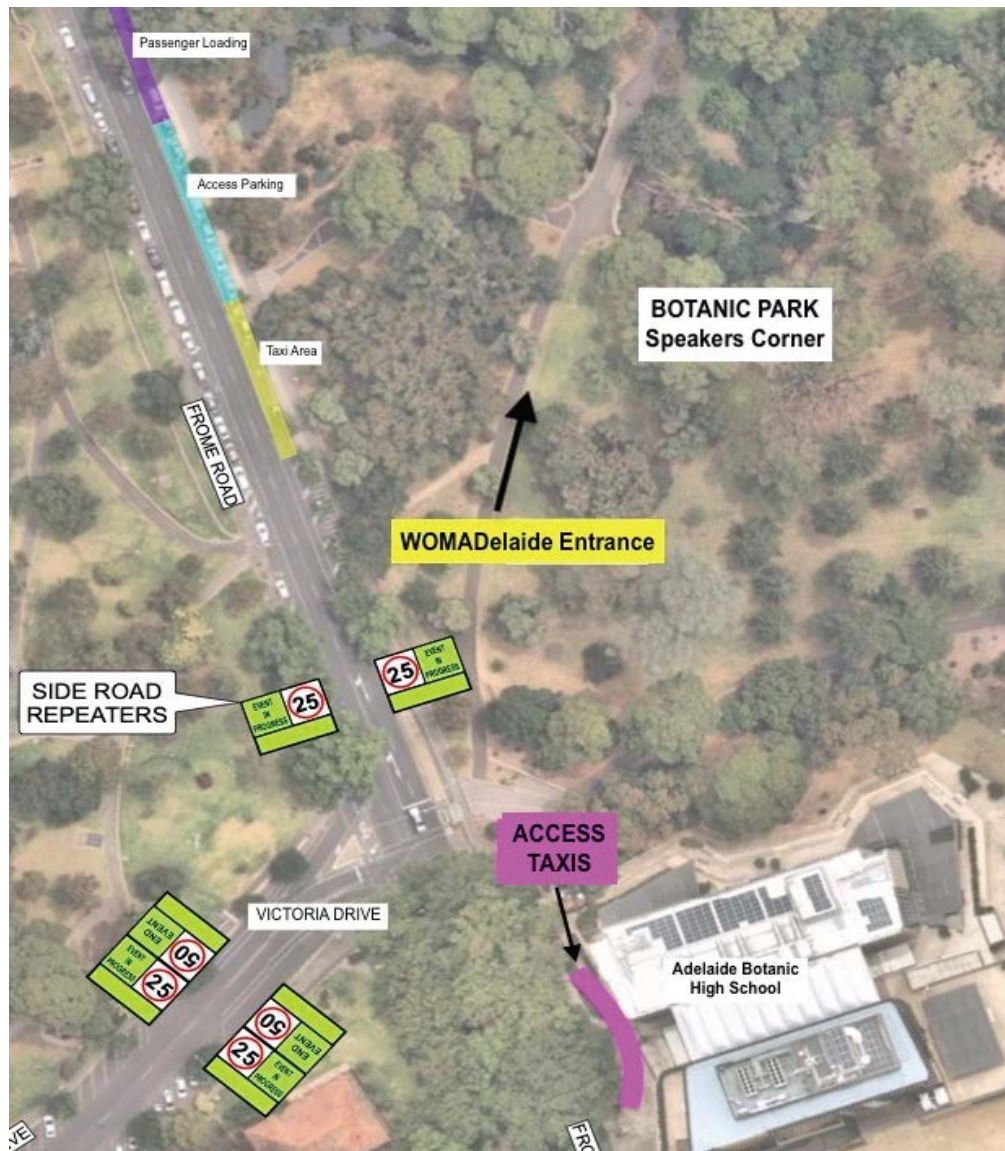
An accessible parking and drop-off zone is located next to the Hackney Road entrance, immediately to the south of Plane Tree Drive on Hackney Road. Access taxis are also located here.

There are limited accessible parking and drop-off locations allocated outside the Frome Road entrance, between the Zoo and Victoria Drive on the eastern side of Frome Road. There are also access taxis located on Frome Road outside Adelaide Botanic High School.

Accessible parking is shown on the maps on the following page. These parks do not require payment.

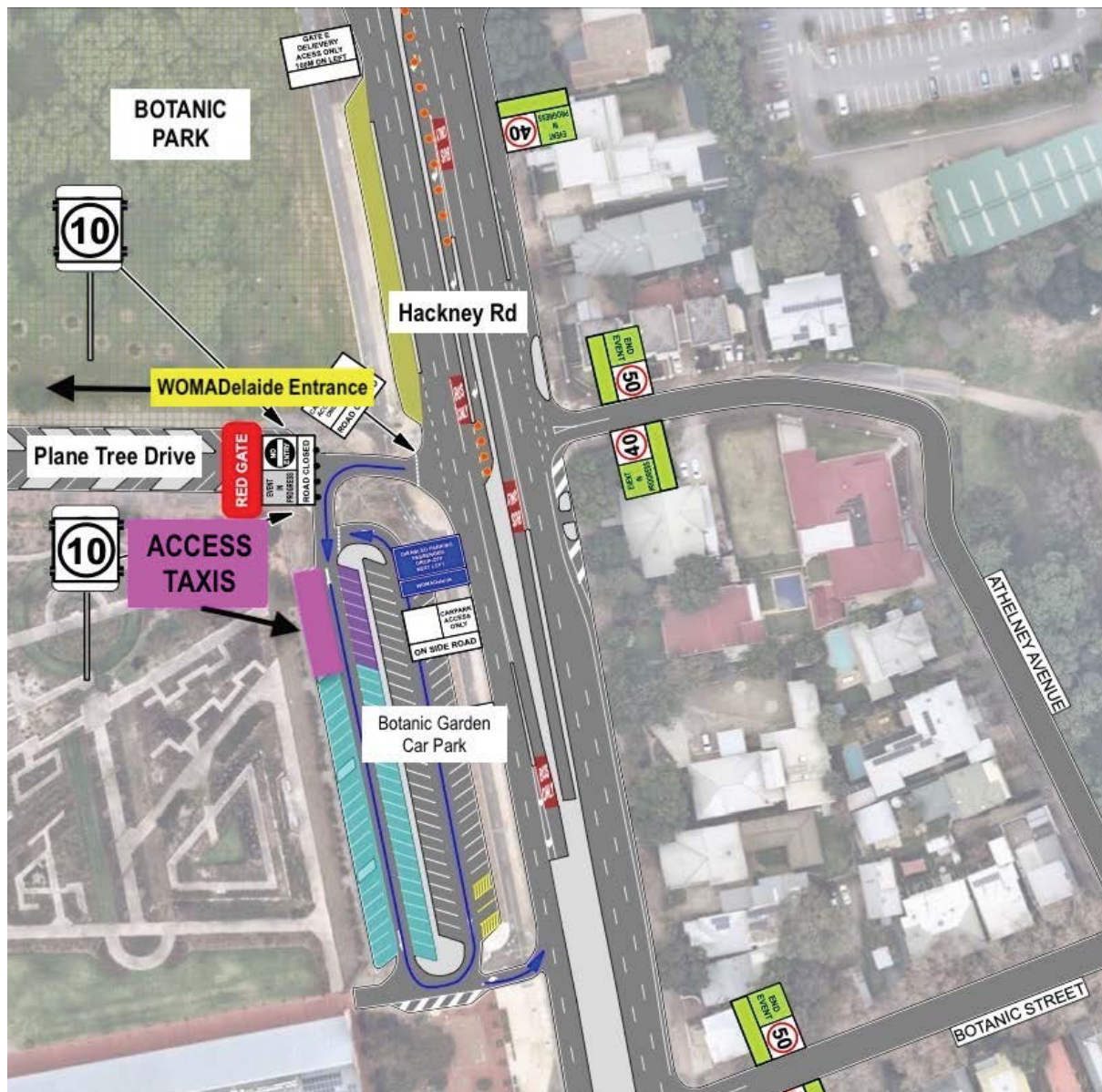
Access taxi bookings can be made through Suburban Taxis by calling 1300 360 940.

## Frome Gate Map





## Hackney Gate Map



### Public transport

If you are coming from the city or North Adelaide, there is a free bus service, the 98A and 98C.

Services operate every 15 minutes on weekdays and every 30 minutes on weekends. The route map can be found here: <https://www.adelaidemetro.com.au/routes/98c>

There is also a free tram within the city. The closest tram stop is the "Botanic Gardens" stop on North Terrace. From here, walk north along Frome Road to the Frome Road festival gate for entry.

For timetables, visit the Adelaide Metro website: <http://www.adelaidemetro.com.au/plan-a-trip/free-and-special-transport>

---

## Cycling

Bike parking is available adjacent to each entrance. Please ensure that you bring your own bike lock to secure your ride in the allocated parking area.

City cycling maps are available [here](#) with maps 6 and 9 showing access to Botanic Park.

---

## Entrances

There are two entrances to WOMADelaide, one on Hackney Road and one on Frome Road.

Both function as both entrances and exits, and both are wheelchair accessible.

At Hackney Road, the first access point/line left of the entrance is accessible.

At Frome Road, the middle access point/line is accessible. Both areas have Box Offices, and staff who will scan your wristband and check your bags.

---

## Bag Check-In

Bag Check-Ins are located at both the Frome Road and Hackney Road main entrances. A \$3 donation is required to use the Bag Check-In, with all proceeds donated to the WOMADelaide Foundation. The Bag Check-In will close at 12am nightly. All items are left at your own risk.

What you can check in:

- Handbags, small bags or daypacks

What you can't check in:

- Valuables (wallets / purses, phones, cameras, signed vinyl)
  - Coats / jumpers or loose items of clothing
  - Prams / strollers
  - Open bags (e.g. shopping bags)
  - Sun shades, chairs and blankets
- 

## Getting around

---

### Site Overview

The site is very large, and it can take some time and energy to get from one part to another. We recommend you plan your day with this in mind.

There are details in the pages following about accessibility for people with asthma, details on the paths and surfaces, sensory information, and other facilities.

---



## Site Map

View / download PDF map [here](#)



## Wheelchair and step-free access

Most of the festival site is wheelchair-accessible, but there may be some areas that are difficult to navigate, especially for manual wheelchairs.

Several areas of the site present difficulties due to uneven, moderately sloping locations and approaches, in particular the Botanical Bar and the Hackney Stalls.

Given that areas of the festival site are uneven and the pathways between stages can become very crowded, for reasons of public safety WOMADelaide will carefully manage the numbers of mobility scooters admitted. Direct

application for a permit should be made to the **Box Office Manager by 5pm Friday 27 February**.

Please email [bec@womadelaide.com.au](mailto:bec@womadelaide.com.au).

Enquiries after this date should be directed to the onsite Box Office.

---

## **Ground surfaces**

WOMADelaide is situated in Adelaide's Botanic Park, and the terrain consists of a combination of mostly flat grass, paved areas and gravel, with small areas of bark chips, particularly around the Hackney Stalls area.

There are some areas with small hills, especially on the eastern side of the park.

During busy periods, and after rain, parts of the park may become muddy.

Where a sealed pathway is not available to move between areas of the site, an unsealed clearway has been created to assist with moving through the site, this is marked on the map.

---

## **Paths and lighting**

All paths are marked on the map.

Some paths are sealed/on hard surfaces.

Some paths are over grass.

The main pathway across the site is on grass, it is marked as an Unsealed Clearway on the map (shown by a blue line). This pathway will be mown so it is shorter than other grass, and has signs and a row of lights that show where the path goes.

At night the site can get quite dark in areas that are not busy, but there will be lights where the food, bars, toilets, and other amenities are, as well as lights for the path and across the park.

---

## **Asthma**

At times Botanic Park / Tainmuntilla can become dusty. Anyone who suffers from asthma should:

- Consider wearing a mask
- Bring the specific medication they need
- Note the location of the nearest first aid station in case they need any assistance – there are 2 First Aid stations around the park:
  - One between Stage 2 and Foundation Stage
  - One within Adelaide Botanic High School
- There will also be a pop-up pharmacy next to First Aid between Stage 2 and Foundation Stage, where pharmacists will be available to assist with any health needs.

WOMADelaide is a smoke-free festival, and no one is allowed to smoke (including e-cigarettes and vapes) on site, except in designated smoking zones.

## Sensory information

WOMADelaide can be an overwhelming experience for some people. There is a lot of loud music, many people, and a variety of smells and textures.

There are quieter areas at various times, especially when there is no music playing and further away from the paths.

As long as you have your wristband, you can enter and exit as often as you need. There are quieter areas along the River Torrens near the Frome Road entrance. You must scan out if you want to return to the festival and scan in again on the same day. Scanning will be done by staff at the entrances.

See page 17 for Sensory Bus information.

---

## Hidden Disabilities Sunflower

WOMADelaide is a member of Hidden Disabilities Sunflower.

The Hidden Disabilities Sunflower is a symbol for people living with a disability or condition that may not be immediately apparent – helping them share that they may need a helping hand, understanding, or more time in shops, at work, on transport, or in public spaces.

As a member, WOMADelaide acknowledges what the sunflower symbol represents, providing training to our volunteers and staff on the initiative. Find out more [here](#).



## Facilities and spaces

---

### Toilets and changing facility

#### Toilets

Portable toilets are situated across the park, marked on the map.

There are accessible toilets available at all toilet locations including Speakers Corner and multiple locations along Plane Tree Drive (near Moreton Bay Stage, Zoo Stage, and Stage 3) .

#### Accessible Changing Facility

There is an Accessible Changing Facility on-site, it is located on Plane Tree Drive near the Hackney Gate. This facility includes ramp access, automatic door entry, adult size change table, and a ceiling hoist, as well as a working toilet.

---

### Facilities

#### First Aid

The First Aid facilities are marked on your map. If you require immediate first aid, please let a staff member know. There is also a pharmacy on site if you need to buy supplies or speak to a chemist.

#### Parenting Room

Parents with babies and toddlers can use the shaded, comfortable and discrete Parenting Room (located on the map). Nursing parents at WOMADelaide have access to feeding chairs, baby changing facilities, and a microwave.

## **Facilities**

### **Wheelchair Chargers**

A dedicated electric wheelchair battery charger will be available at the Information Booth (centrally located near the First Aid tent), with additional charging facilities available at the Bag Check-In facilities near each entrance.

---

## **Sensory Bus**

South Australia's first Sensory Bus will be on site to support anyone who may need a quiet space to pause, regulate and reset during the event.

The Sensory Bus, owned by the Government of South Australia and operated by Autism SA, sponsored by Torrens Transit, provides a calm, purpose-built environment for individuals who may experience sensory overload or need time away from the busy atmosphere.

The Bus is a retired Torrens Transit Bus that has been refurbished to create a purpose-built, mobile sensory room designed to help autistic South Australians feel welcome and supported while enjoying community events.

Inside the bus features comfortable seating areas, low lighting, sensory toys and activities. Priority access is available for autistic people, people with disability and anyone wearing a Hidden Disability Sunflower Lanyard.

The Sensory Bus is located in between Moreton Bay Stage 5 and accessible toilets. Please see site map on page 13 for location.

**Opening Hours:** Fri – 4pm till late / Sat-Mon – 12noon till late

---

## Food and drink

You can bring your own food and water to WOMADelaide.

If you would like to buy food and drink on site, there are many food vendors from many different cultures, catering to many different dietary needs.

All vendors are cashless. You will need to pay with a card. More information on Dietary information for each of the Food stalls can be found [here](#).

---

## Bars

There are six bars over the site. All bars have a lowered accessible service area.

Several bars onsite may present access difficulties due to uneven, moderately sloping locations and approaches, in particular the **Botanical Bar**.

All bars are cashless. You will need to pay with a card.

Please do not bring your own alcohol to WOMADelaide.

---

## Stages

There are nine stages located throughout the park, including:

- Foundation Stage
- Stage 2
- Stage 3
- Zoo Stage 4
- Moreton Bay Stage 5
- Frome Park Pavilion 6
- Stage 7
- The Academy Stage
- Taste The World stage (located on the Adelaide Botanic High School plaza)

There are also pop-up performance locations at Adelaide Botanic High School's gym (The Studio) and KidZone, as well as roving performances around the park each day. All stages and locations are marked on the map.

---

## Access Platforms

Access platforms are provided near the 3 main stages. Foundation, Stage 2 and Stage 3.

These are raised platforms for people with disabilities who may need to sit down while watching a show, or use mobility aids.



The viewing platforms have some chairs, space for mobility aids, and large stepped seating. Some of the access platforms have only one level.

The access platforms can fill up quickly for popular shows, so plan to arrive ahead of time for performances.

---

## **WoMarkets**

Featuring over 40 retail outlets, the WoMarkets is a precinct where patrons can explore and immerse themselves in the experience of cultures coming together to share their wares.

This covered marketplace stretches over 160 metres on Plane Tree Drive and runs along a sealed pathway.

---

## **KidZone**

KidZone is an area for children's activities. Expect a delightful blend of storytelling, First Nations-led weaving, music, dance, puppet-making, nature and educational adventures, all tailored to children under 12 within a safe space.

KidZone is located on the Frome Road side of Botanic Park, near the WoMarkets.

Children must be accompanied by an adult at all times.

---

## Staff and Volunteers

Staff and volunteers wear red WOMADelaide t-shirts and hi-vis vests. They can help you with any questions you have at the festival.

Some are walking around the site, some are stationed at different activities, and there are always staff close to the Box Offices.

Many WOMADelaide staff and volunteers have completed Access2Arts Disability Access and Inclusion training, as well as safety briefings.

A select group of volunteers also complete an 'Access All Areas' online training by SupportAct about intervening when witnessing sexual harassment, assault, discrimination and bullying.

---

## Thank you!

We hope you have a great time at WOMADelaide.

If you have questions, you can contact WOMADelaide on (08) 8271 1488 or [info@womadelaide.com.au](mailto:info@womadelaide.com.au).

If you have feedback on this Access Guide, please let Access2Arts know via [hello@access2arts.org.au](mailto:hello@access2arts.org.au) or by calling (08) 8463 1689.