

 **Hackett Foundation** presents

WOMADelaide

- THE WORLD'S FESTIVAL ♥ 2022 -



- **POCKET GUIDE** -



Presenting Partner



Hackett
Foundation

CONTENTS

<i>Kardla Paltendi (Dancing Fire)</i>	5	<i>Silence</i>	33
Timetable	6	Merchandise	35
Friday	7	Northern Sound System Studio	37
Saturday	8	Taste the World	39
Sunday	10	Taste the World Recipe	40
Monday	12	<i>TAKSU</i>	41
<i>Cathedral of Light</i>	15	<i>The Memoryologist</i>	43
Bars	17	Greening Australia	44
Around the Park	22	The Planet Talks	47
<i>AUSSIE</i>	25	<i>HALCYON</i>	57
KidZone	26	General Information	58
<i>HEXADECA</i>	31	Contribute to WOMADelaide	61
ABC - Radio Live	32	Thank you	63



Welcome to Country

We acknowledge the Kurna people as the Traditional Owners of country in which WOMADelaide is presented and recognise their continuing connection to land, waters and culture.

We pay our respects to Elders past, present and emerging.

Keolis Downer Accessible Seating

Accessible seating is provided in front of the Foundation Stage, Stage 2 and Stage 3. In addition, our shaded and elevated "Take a Rest" seating banks are available for anyone requiring an extra level of care and comfort to take in all the wonderful performances – you will find them in front of the Foundation Stage and Stage 2.



Channel 9 Sunscreen Station

Find us at TerryWhite Chemmart next to the Info Booth.



SLIP on some protective clothing
SLOP on SPF30+ sunscreen
SLAP on a hat
SEEK shade
SLIDE on some sunglasses



WOMADelaide App

WOMADelaide's official app (for iPhones or Androids) is essential for schedules, artist information, site maps, personal planners and more – all at the touch of a button!



FREE to download at the iPhone App Store or Google Play.

AppMajik

Conversations



that connect us

 Radio
ADELAIDE

Stay connected with the ABC



STREAM NOW



KARDLA PALTENDI (DANCING FIRE)

This stunning new installation celebrates the re-emergence of traditional Kaurna fire practice and taps into humanity's fascination with fire, shining a light on Karrawirraparri (the River Torrens) and its reflection mirrored in the Milky Way. The world-premiere collaboration between Kaurna man Jamie Goldsmith, his Taikurtinna dance group and installation artist Simon Hutchinson symbolises the primordial, eternal connections of land and sky, material and spiritual, as giant flaming pillars disintegrate and crumble, drawing us like moths to dancing flames.

Fri 9.10pm, Sat 8.40pm, Sun & Mon 8.10pm

TIMETABLE

LEGEND

F	Foundation Stage	FP	Frome Park
2	Stage 2	K	KidZone
3	Stage 3	R	Roving
Z	Zoo Stage	1	One Show Only
MB	Moreton Bay Stage	S	Seated Audience
P	Frome Park Pavilion	PT	The Planet Talks
7	Stage 7	TTW	Taste the World
AP	Adelaide Botanic HS Plaza	W	Workshop
AG	Adelaide Botanic HS Gym		

DAILY

time	artist	where
4.30 & 6.45pm	Restless Dance Theatre	R
4.30-7.30pm	KidZone	K
4.30-10.30pm	HEXADECA	Opposite 2
4.30-11.00pm	<i>Bush Mechanics: The Exhibition</i>	FP
5.00-8.00pm	<i>The Memoryologist</i>	Near 2
6.00-9.00pm	NSS Studio	
6.30pm	Cocoloco	R
7.45, 8.35 & 9.15pm	Gravity & Other Myths - Process	R

WOMAdelaide reserves the right to change the timetable without notice.
All details correct at time of publishing.

FRIDAY 11 MARCH

Gates open 3.30pm.

time	artist	where
5.40pm	Kurna Welcome to Country	F
6.00pm	Joseph Tawadros with the Adelaide Symphony Orchestra 1 S	F
	Gaby Moreno	Z
	Charles Maimorosia	P
	TTW Carla Lippis' Mondo Psycho	AP
	Adelaide City Libraries Bedtime Stories	K
7.00pm	Jerome Farah 1	7
7.15pm	Kutchu Edwards 1	2
	Springtime 1	3
	Glass Beams	MB
7.35pm	Dancenorth - NOISE S	FP
8.00pm	Sokel 1	P
	TTW Grace Barbé	AP
8.30pm	Baker Boy	F
	Eishan Ensemble S	Z
9.00pm	Reb Fountain	7
9.10pm	<i>Kardla Paltendi (Dancing Fire)</i>	FP
9.30pm	Taikoz	2
	The Shaolin Afronauts 1	3
	Parvyn	MB
9.35pm	Dancenorth - NOISE S	FP
10.00pm	El Gran Mono	P
10.30pm	L.A.B 1	F
	Chikchika 1	Z
11.00pm	Inner City (Live) 1	7

SATURDAY 12 MARCH

Gates open 10.15am.

time	artist	where
10.30am	ABC Radio National <i>The Music Show Live</i>	3
12.30pm	W Yoga	MB
	W Yoga	7
1.30pm	Sorong Samarai	F
	TTW The New Monos	AP
	PT Jane Goodall's Survival Guide for Troubled Times	P
	W Dancenorth	Z
2.30pm	Azymuth & Marcos Valle	2
	Grace Barbé	3
	W Farhan Shah & Sufi-Oz	MB
	The Crooked Fiddle Band	7
3.00pm	Story Time with Eddie Betts	K
3.30pm	Baker Boy	F
	W Te Tangi O Te Ka'ara	Z
	TTW Eishan Ensemble	AP
	ASO - <i>Silence</i>	AG
	PT The Wilderness Myth: How Humans Can Nurture Nature	P
4.30pm	Balkan Ethno Orchestra	2
	Ausecuma Beats	3
	Gaby Moreno S	MB
	Bullhorn	7
5.30pm	SUB-TRIBE	F
	Bush Gothic	Z
	Valanga Khoza 1	P
	TTW Joseph Tawadros	AP

WOMADelaide reserves the right to change the timetable without notice. All details correct at time of publishing.

time	artist	where
6:30pm	A.B. Original 1	2
	Martinez Akustica 1	3
	ZÖJ S	MB
	Glass Beams	7
7.05pm	Dancenorth - <i>NOISE</i> S	FP
7.30pm	Melbourne Ska Orchestra	F
	Luluc 1	Z
	Dhungala Baarka 1 S	P
	TTW L-FRESH The LION	AP
8:30pm	Tijuana Cartel 1	7
8.40pm	<i>Kardla Paltendi (Dancing Fire)</i>	FP
8.45pm	Motez (Live) 1	2
	Haiku Hands 1	3
	High Ace 1	MB
9.05pm	Dancenorth - <i>NOISE</i> S	FP
9.30pm	El Gran Mono	P
9.45pm	Courtney Barnett 1	F
	Australian Art Orchestra	Z
10.30pm	AROHA DJ Set 1	7

time	artist	where
11.00am-9.45pm	HEXADECA	Opposite 2
12 noon-11.00pm	<i>Bush Mechanics: The Exhibition</i>	FP
12-2pm & 3-5pm	<i>The Memoryologist</i>	Near 2
12 noon-6.00pm	KidZone	K
1.00 & 3.30pm	Cocoloco	R
2.30-8.30pm	NSS Studio	
4.30 & 6.45pm	Restless Dance Theatre	R
7.45, 8.35 & 9.15pm	Gravity & Other Myths - <i>Process</i>	R

SUNDAY 13 MARCH

Gates open 10.30am.

time	artist	where	
12 noon	W Yoga	MB	
	W Yoga	7	
1.00pm	W Ausecuma Beats	Z	
	PT Electric Future Now	P	
	TTW Sorong Samarai	AP	
1.15pm	Te Tangi O Te Ka'ara	F	
2.00pm	The New Monos	2	
	Balkan Ethno Orchestra	3	
	W Melbourne Ska Orchestra	MB	
	Parvyn	7	
	3.00pm	L-FRESH The LION	F
3.00pm	W Haiku Hands	Z	
	PT The Minefield: Should Children Get the Vote?	P	
	Story Time with Eddie Betts	K	
	TTW Bush Gothic	AP	
	ASO - <i>Silence</i>	AG	
	4.00pm	SUB-TRIBE	2
	Reb Fountain	3	
	The Crooked Fiddle Band	MB	
Ausecuma Beats	7		
5.00pm	Victor Martinez Parada	P	
	TTW Parvyn	AP	
5.15pm	YID!	F	
	Elsy Wameyo 1	Z	
6.00pm	Farhan Shah & Sufi-Oz 1	7	

WOMADelaide reserves the right to change the timetable without notice.
All details correct at time of publishing.

time	artist	where
6.15pm	Emma Donovan & The Putbacks	2
	Bullhorn	3
	Joseph & James Tawadros 1 S	MB
7.00pm	ZÖJ S	P
	TTW Melbourne Ska Orchestra	AP
7.15 pm	Goanna 1	F
	Yé-Yé 2.0	Z
8.00pm	Carla Lippis' Mondo Psycho 1	7
8.10pm	<i>Kardla Paltendi (Dancing Fire)</i>	FP
8.30pm	Sorong Samarai	2
	Electric Fields 1	3
	Bush Gothic	MB
8.35pm	Dancenorth - <i>NOISE</i> S	FP
9.00pm	El Gran Mono	P
9.30pm	The Cat Empire 1	F
	Elephant Sessions	Z
10.00pm	Jayda G 1	7
	Dancenorth - <i>NOISE</i> S	FP

time	artist	where
11.00am-9.30pm	HEXADECA	Opposite 2
12 noon-11.00pm	<i>Bush Mechanics: The Exhibition</i>	FP
12-2pm & 3-5pm	<i>The Memoryologist</i>	Near 2
12 noon-6.00pm	KidZone	K
1.00 & 3.30pm	Cocoloco	R
2.00-8.00pm	NSS Studio	
4.30 & 6.45pm	Restless Dance Theatre	R
7.45, 8.35 & 9.15pm	Gravity & Other Myths - <i>Process</i>	R

MONDAY 14 MARCH

Gates open 10.30am.

time	artist	where
12 noon	W Yoga	MB
	W Yoga	7
1.00pm	Taikoz	F
	W Valanga Khoza	Z
	PT Bug Life: How Insects Rule Our World	P
	Uncle Stevie's Kaurna Classroom	K
	TTW YID!	AP
2.00pm	Grace Barbe	2
	Gordon Koang 1	3
	W Balkan Ethno Orchestra	MB
	Eishan Ensemble S	7
2.30pm	Uncle Stevie's Kaurna Classroom	K
3.00pm	Te Tangi O Te Ka'ara	F
	W Bullhorn	Z
	PT Climate Fighting Farming	P
	ASO - <i>Silence</i>	AG
	TTW ZÖJ	AP
4.00pm	Elephant Sessions	2
	Emma Donovan & The Putbacks	3
	Australian Art Orchestra	MB
	Cedric Burnside 1	7
	Uncle Stevie's Kaurna Classroom	K
5.00pm	Melbourne Ska Orchestra	F
	Makepisi 1	Z
	PT Future Forward: Meet the Changemakers	P
	TTW Marlon x Rulla	AP

WOMADelaide reserves the right to change the timetable without notice.
All details correct at time of publishing.

time	artist	where
6.00pm	The New Monos	7
6.15pm	King Stingray 1	2
	Asteroid Ekosystem 1	3
	Yé-Yé 2.0	MB
6.35pm	Dancenorth - NOISE S	FP
7.00pm	Charles Maimorosia	P
	TTW Motez	AP
7.15pm	YID!	F
	Karen Lee Andrews 1	Z
8.00pm	Barkaa 1	7
8.10pm	<i>Kardla Paltendi (Dancing Fire)</i>	FP
8.15pm	L-FRESH The LION	2
	Azymuth & Marcos Valle	3
	The Empty Threats 1	MB
8.35pm	Dancenorth - NOISE S	FP
9.00pm	El Gran Mono	P
9.30pm	Paul Kelly 1	F
	Sonz of Serpent 1	Z
10.00pm	Floating Points 1	7

time	artist	where
11.00am-9.30pm	HEXADECA	Opposite 2
12 noon-11.00pm	<i>Bush Mechanics: The Exhibition</i>	FP
12-2pm & 3-5pm	<i>The Memoryologist</i>	Near 2
12 noon-6.00pm	KidZone	K
1.00 & 3.30pm	Cocoloco	R
2.00-8.00pm	NSS Studio	
4.30 & 6.45pm	Restless Dance Theatre	R
7.45, 8.35 & 9.15pm	Gravity & Other Myths - <i>Process</i>	R



SUBARU
XV
ALL-WHEEL DRIVE

FIND OUT
MORE OR BOOK
A TEST DRIVE



The Subaru XV Hybrid AWD brings you attitude and fun. Boasting Subaru's e-Boxer technology, the set up is a fusion of seamless hybrid engineering that teams power from a compact battery and electric motor, with the petrol engine. The end result, is a Subaru to drive you into the future.

At Jarvis Subaru we are here to help and we pride ourselves on putting you, our customer, first.

Jarvis Subaru

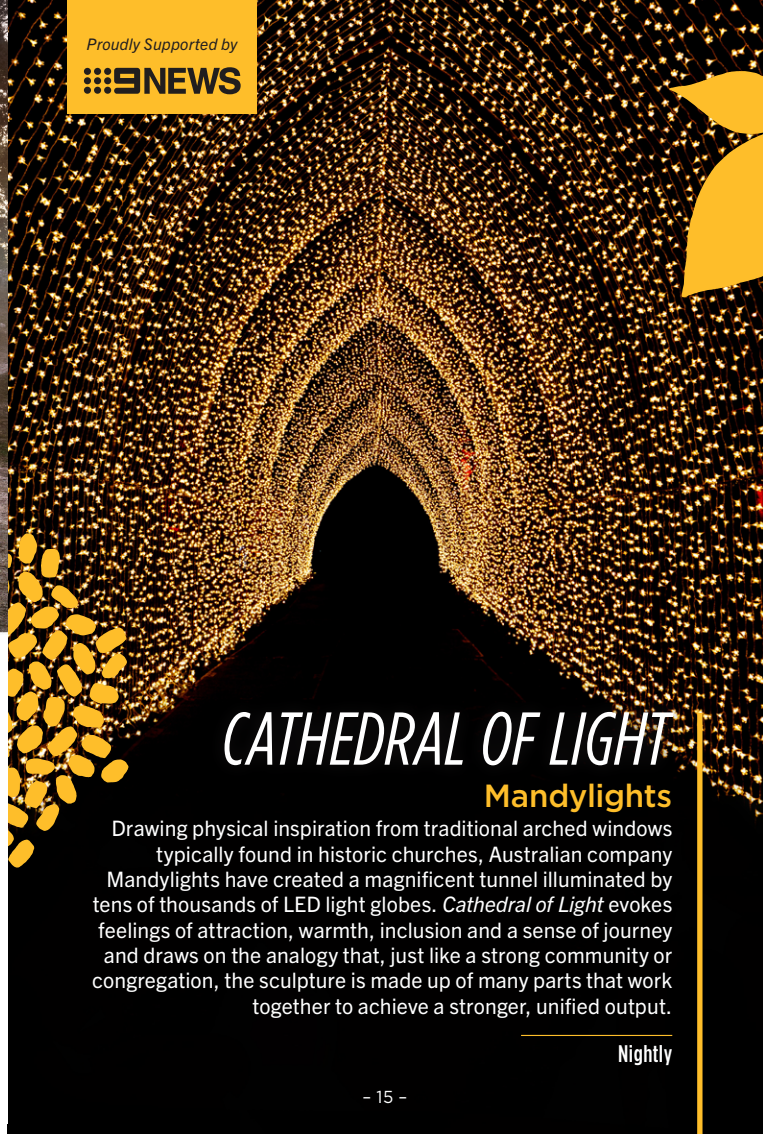
Ph: 1300 13 77 33

ADELAIDE • KENSINGTON • MEDINDIE • BAROSSA

Jarvis
Subaru



Proudly Supported by



CATHEDRAL OF LIGHT

Mandylights

Drawing physical inspiration from traditional arched windows typically found in historic churches, Australian company Mandylights have created a magnificent tunnel illuminated by tens of thousands of LED light globes. *Cathedral of Light* evokes feelings of attraction, warmth, inclusion and a sense of journey and draws on the analogy that, just like a strong community or congregation, the sculpture is made up of many parts that work together to achieve a stronger, unified output.

Nightly

Your adventure continues here.

ExperienceAdelaide.com.au →



Adelaide.
Designed
for Life.

Image: South Australian
Tourism Commission

BARS

WOMAdelaide is Cashless!

All bars and vendors are cashless, accepting **only card payment** for greater speed of service and ease of transaction. Accepted cards are Visa, MasterCard, Diners, or pre-paid debit cards, processing EFTPOS and PayWave/PayPass. AMEX or other cards not listed above will not be accepted.

Other festival services such as food, retail stalls and the WoShop will only accept card payments.

Wine Bottle Deposit

\$10 deposit - refund on return of bottle with deposit card

Each wine bottle purchased will require a \$10 deposit. A deposit card will be issued and must be returned to the bar with the bottle in order to receive the deposit refund. Bottles are not to be removed from the park.

Please Return Your Cup

How it works

1. All cups are washed on-site and re-used at the festival.
2. Place used cups in the blue 'cup return bins' anywhere at the festival.
3. Can't find a bin? You can return cups at all bars and exits too.



RE-USE > RETURN > REDUCE



S.C. PANNELL BAR

Appearing in Botanic Park for the first time, S.C. Pannell celebrates the belief that McLaren Vale's benign, Mediterranean climate and complex mosaic of ancient geology fosters a palate of varieties that best reflect our climate and way of life. Share Fiano, Grenache, Montepulciano, Tempranillo and Touriga Nacional with food, the people you love and all the music of WOMADelaide.



S. C. PANNELL
WINEMAKER

pannell.com.au



BOTANICAL GIN BAR

With its spectacular range of South Australian gins, the Botanical Gin Bar has something to suit the palate of every gin lover including botanicals and a specially-made WOMAD Gin by 78 degrees.



78° DISTILLERY BAR

Chill out for a moment with a delicious and sustainable craft cocktail at the 78 Degrees Distillery Bar, showcasing our limited edition WOMAD Gin and other 78 Degrees spirits, all produced using sustainable production methods and local ingredients, mixed into fun and fantastic festival cocktails!



78degrees.com.au



BASSO BAR

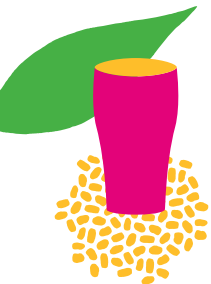
As low as the best bass line from Stage 2: low in sulphur, winemaking intervention and at the Basso Bar, temperature. Try chilled S.C. Pannell Basso Garnacha and keep on dancing.



S. C. PANNELL
WINEMAKER

pannell.com.au



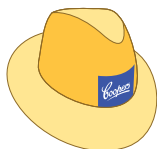


COOPERS GARDEN BAR

Coopers have been the beer partner of WOMAdelaide for its entire 30-year duration and there's always a Coopers beer to suit. Enjoy an Original Pale Ale, Pacific Pale Ale or XPA in an outdoor setting that's as chilled as the beer you will be drinking.



coopers.com.au



Coopers Hat Giveaway!

Buy 4 beers at the Coopers Garden Bar on Saturday or Sunday and receive a free hat whilst stocks last!



HILLS CIDER BAR

Handcrafted with 100% fresh Adelaide Hills apples and pears, The Hills Cider Company proudly celebrates and supports Australian growers. Crafted with minimal intervention, with absolutely no added sugar, concentrate, flavouring or water, they believe the integrity of the fruit is paramount at every step. The range is both vegan friendly and gluten free.



thehillscidercompany.com.au

BUGGY BARS

Keep an eye out for our Buggy Bars, serving ice cold beer, cider, wine and soft drinks!



AROUND THE PARK



Global Village

Food, arts and more

Like the amazing acts performing on WOMADelaide's stages, the Global Village presents an abundance of riches.

With around 100 stalls offering international food, arts, crafts, clothing, official festival merchandise and music, your new favourite festival food stall and "where did you get that?" purchase awaits!

Gelista

Award winning gelati

As well as premium milk-based flavours, such as the award-winning Peanut Butter with Chocolate and Caramel Swirl, Gelista also offers an extensive range of vegan/dairy free options. These include, Strawberry Sorbet, Yuzu Sorbet and Salted Caramel with Crunchy Toffee Pieces!

Gelista strives to use the best local ingredients from local producers in all of their gelati products. That's what creates a taste and texture that's uniquely Gelista!

Why not stop by for a scoop or two?



Miss Isla

Bring your own bottle

Swing by Miss Isla for free water infusions as you sway and play under our misters. BYOB and enjoy a better habit.

Tap water is one of the best choices you can make for your health, the environment and your wallet.



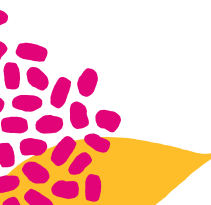
PōPSI COOL

Natural ice pops

PōPSI COOL is an artisan handcrafted, 100% natural ice pop made with the highest quality local ingredients.

Our diverse range of refreshing ice pops includes gluten free, and dairy free options to suit your lifestyle!

Pop by and say hello!



GREAT Food Lives HERE



**WOMADELAIDE
COMMUNITY
PARTNER 2022**



Monga Khan

1916

Born in British India
in 1870



Amy Lee Gow

10/10/1917

Born in Ravenswood,
Queensland, 1904



May Ah Cum

14/11/1921

Born in Alooomba,
Queensland, 1910



Jane Mary Low Choy

9/9/27

Born in Cooktown,
Queensland, 1879



Gum Yook Lee

27/7/1922

Born in Brock's
Creek, Northern
Territory, 1893



Jenny Ah See

9/7/1909

Born in Warwick,
Queensland,
3/8/1908



AUSSIE

Peter Drew

These photographs, and thousands like them, were taken as a function of the White Australia Policy. Each of these people applied for an exemption to the dictation test so they could leave Australia and return without fear of being denied re-entry on the grounds of race. You'll notice that several of the applicants displayed here were born in Australia but were required to hold exemption papers regardless. Today their records are kept in the Australian National Archive.

KidZone is the dedicated world of kid-friendly fun in the heart of WOMADelaide. Look for the giant “**WOMAD**” letters – it’s your gateway to free kids activities!

KIDZONE

General opening hours: Fri 4.30-7pm. Sat, Sun & Mon 12noon-6pm.

NEW TO KIDZONE

Gravity & Other Myths

Adelaide-based and world renowned circus and physical theatre company, Gravity & Other Myths, offer lessons in trust, risk-taking and creativity in a safe and supportive environment through their acrobatic workshops that are open to all ages and abilities.

Nature Yoga

Join us in a magical practice of yoga that unites ancient wisdom from around the world to remind us of our connection to nature. Together we will tell stories with fun movements and embark on an adventure trail where we can hop like a kangaroo, soar like an eagle and unlock hidden treasures.

Lakun Mara

Ngarrindjeri, Narungga, Ngadjuri and Wirangu artist Sonya Rankine weaves a collaborative sculpture, using traditional First-Nations weaving techniques representing a culture linked to survival and revival.

Mirror Mirror

A kaleidoscope of infinite possibility

Patch Theatre’s *Mirror Mirror* takes you into the heart of a disco ball and lets you flip the light switch – literally. Inside the dome every surface is a gleaming mirror. Journey to infinity and back again as you gaze into the present, check-in with yourself and get lost in a kaleidoscopic dream.

PATCH

KIDZONE TIMETABLE

SEE PAGE 29 FOR SA MUSEUM TIMES.

FRIDAY	4.30-7.00pm	Climbing Tree’s Nature Village Evelyn Roth’s Nylon Zoo
	5.00-7.00pm	Adelaide City Libraries Book Nook
	6.00-6.30pm	Bedtime Stories
SATURDAY	12 noon-6.00pm	Climbing Tree’s Nature Village Evelyn Roth’s Nylon Zoo Nature Yoga Stations
	12 noon-12.30pm	Nature Yoga Sessions
	1.00-1.45pm	Pico’s Puppet Palace (at Nylon Zoo)
	1.00, 1.45, 2.30, 3.30pm	Gravity & Other Myths (Circus Workshop)
	1.00, 2.15, 4.00pm	Lakun Mara (Weaving Workshops)
	2.00-5.00pm	Adelaide City Libraries Book Nook
5.00-5.30pm	Nature Yoga Sessions	
SUNDAY	12.00-6.00pm	Climbing Tree’s Nature Village Evelyn Roth’s Nylon Zoo Nature Yoga Stations
	12 noon-12.30pm	Nature Yoga Sessions
	1.00, 1.45, 2.30, 3.30pm	Gravity & Other Myths (Circus Workshop)
	1.00, 2.15, 4.00pm	Lakun Mara (Weaving Workshops)
	2.00-5.00pm	Adelaide City Libraries Book Nook
	3.00-3.30pm	Story Time with Eddie Betts
	5.00-5.30pm	Nature Yoga Sessions
MONDAY	12 noon-6.00pm	Climbing Tree’s Nature Village Evelyn Roth’s Nylon Zoo Nature Yoga Stations
	12 noon-12.30pm	Nature Yoga Sessions
	1.00, 2.30, 4.00pm	Uncle Stevie’s Kurna Classroom
	1.00, 1.45, 2.30, 3.30pm	Gravity & Other Myths (Circus Workshop)
	1.30, 2.45, 4.30pm	Lakun Mara (Weaving Workshops)
	5.00-5.30pm	Nature Yoga Sessions

All times subject to change.



illuminate adelaide

Celebrating Art, Light,
Music & Technology this July



PROGRAM ANNOUNCED
APRIL
← SUBSCRIBE



South Australian Museum

Are you ready to shake, rattle and roll?

Come along as we pull out all the bells and whistles to explore the natural side of music! Let's travel the world together to discover how objects found in nature can be used to make perfect percussion instruments. So, what are you waiting for? Jump on the band wagon! It'll be music to your ears.

SA MUSEUM TIMETABLE

Friday 4.30–7.00pm
Sat, Sun & Mon 12 noon–6.00pm

Music Making Demonstrations

Come along and meet our Museum friends as they demonstrate how to play musical instruments from all over the world made from natural materials.

Suitable for all ages.

Shake, Rattle & Roll

Make, play, and take home your very own percussion instrument made from recycled and natural materials.

Suitable for all ages.

Sat, Sun & Mon 12.30–1.00pm

Young Explorers: Music, Music Everywhere!

Young Explorers is making some noise! Join Pinko the bilby and explore instruments that mimic sounds found in the natural world.

*Sessions: 30 mins.
Suitable for ages 3-5.*

Sat & Sun 4.00pm-4.30pm

Crash, Boom, Bang, it's a Great Big Jam

Jump on the bandwagon and join us for a final jam session with the percussion instruments you've made! Beat the drum, ring a bell, shake your booty, and rattle and roll at the end of another fantastic day.

Suitable for all ages.



Foodland Parenting Room

Discrete parenting room

Parents with babies and toddlers can enjoy a shaded, comfortable and discrete parenting room, next to St John, with access to feeding chairs, baby changing facilities, a microwave and more.

Disposable Nappies

Disposables are one of the greatest contaminants of our waste streams, so please be mindful of our zero waste-to-landfill targets and if you are using disposable nappies, we ask that you remove them from the park with you when you leave. If you are unable to do this, **PLEASE** utilise the clearly marked nappy disposal bins located at the change stations and around Botanic Park!



TerryWhite Chemmart

Health & wellbeing

TerryWhite Chemmart is delighted to offer professional pharmacist advice, quality products and great prices at their pop-up pharmacy between the Foundation Stage and Stage 2. Pharmacists are available at all times to assist with your health needs with pharmacy and pharmacist-only medicines stocked for your convenience.



HEXADECA

Pulsing Heart

Adelaide creative studio Pulsing Heart invites play, provokes thought and inspires connection through experimental and participatory experiences. *HEXADECA* is an architecturally-designed music-making playground that uses stems by artists including Aurora choir, Adam Page and Tom Thum. As the audience sits and spins, they unknowingly activate portions of a musical score, only revealing the track in its entirety when each seat is occupied.

Fri 4.30–10.30pm, Sat 11.00am–9.45pm, Sun & Mon 11.00am–9.30pm

ABC – Radio Live

Visit us!

ABC Radio Adelaide will be live at WOMADelaide, with your favourite presenters across the weekend.

Don't miss Drive with the sharp-witted and charming Jules Schiller on Friday from 4–6.30pm at the Hackney Road entrance, as you arrive. Afternoons with the warm and fun Sonya Feldhoff will be broadcasting adjacent to the WoShop on Monday from 1–4pm.

Sit back, relax and join us for a laugh as part of the audience and enjoy feature interviews, live artist performances and more.

Need a phone charger?

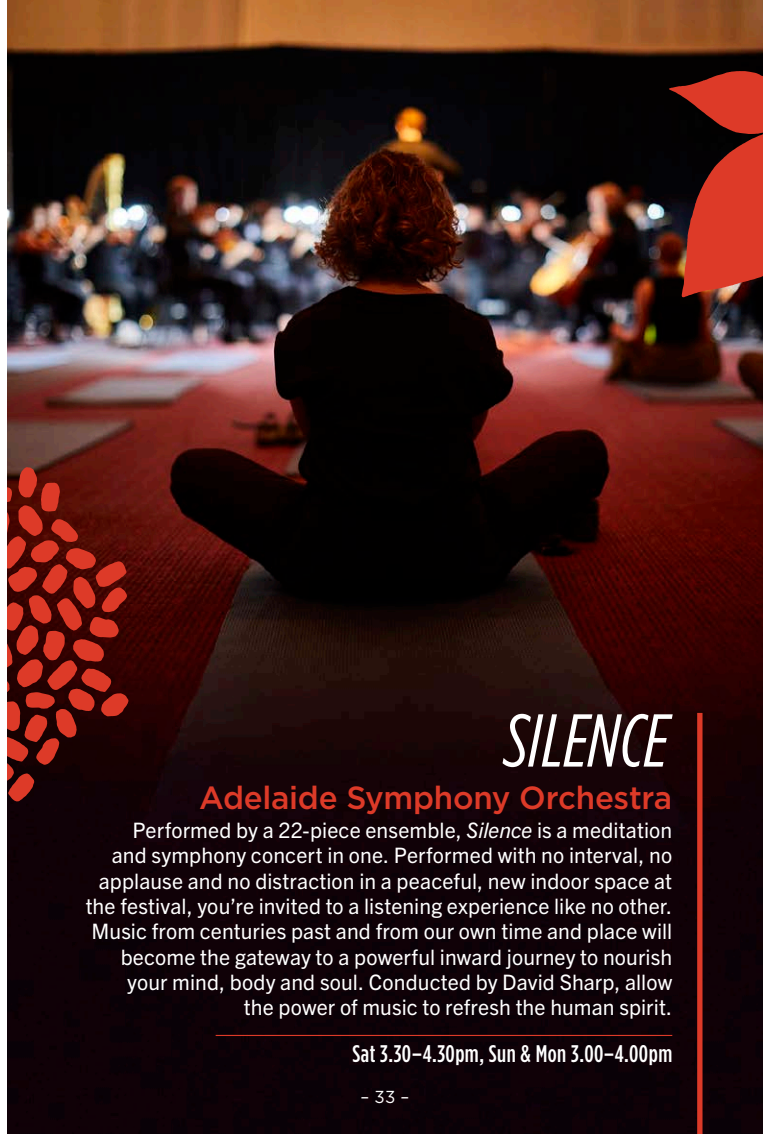
We've got you covered with our phone charging station located at the WoShop.

Get social with us

Take a snap with us and follow ABC Radio Adelaide @abcadelaide for all the latest local news and events.

ABC Radio Adelaide

Proud partners of WOMADelaide for 30 years.



SILENCE

Adelaide Symphony Orchestra

Performed by a 22-piece ensemble, *Silence* is a meditation and symphony concert in one. Performed with no interval, no applause and no distraction in a peaceful, new indoor space at the festival, you're invited to a listening experience like no other. Music from centuries past and from our own time and place will become the gateway to a powerful inward journey to nourish your mind, body and soul. Conducted by David Sharp, allow the power of music to refresh the human spirit.

Sat 3.30–4.30pm, Sun & Mon 3.00–4.00pm

The News That Matters To Adelaide

— 1395 —
FIVEaa
 TALKING ADELAIDE



FIVEaa 1395



fiveaa.com.au



The FIVEaa Player

MERCHANDISE

Mr V Music & WoShop

Meet your favourite artists and take home a festival souvenir. From t-shirts to stubbie holders and hoodies, pick up your exclusive WOMAdelaide and artist merchandise at the new Mr V Music and WoShop superstore, located near the Zoo Stage and open till late every night.

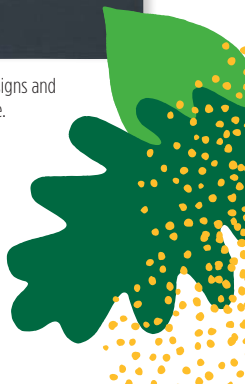
The Planet Talks Book Signings

Absorb the ideas from the great minds showcased at The Planet Talks with their latest publications. Books are available for purchase at Mr V with signings at the following times, off to the side of the Frome Park Pavilion.

- **Sunday 13 March**, following the 1–2pm Planet Talk, signing with Richard Dennis.
- **Monday 14 March**, following the 3–4pm Planet Talk, signing with Charles Massy, Bruce Pascoe and Anika Molesworth.



Other t-shirt designs and colours available.





HEAL EARTH!

**GOOD FOR PEOPLE & PLANET!
CLIMATE-FRIENDLY & SUSTAINABLE**

www.drbronner.com.au

**Real chemistry
doesn't always
come in a bottle**

Find your nearest pharmacy at
www.terrywhitechemmart.com.au

 **TerryWhite
Chemmart.**
that's *real* chemistry

Proudly Supported by

 WOMADelaide x NSS
ACADEMY



NORTHERN SOUND SYSTEM STUDIO

Ever visited a working studio?

You have now. Check it out!

The NSS Studio is showcasing emerging artists recording and performing all this weekend at WOMADelaide!

In 2020 the WOMADelaide Foundation partnered with Northern Sound System (NSS), a vibrant youth music centre in Elizabeth, to create the WOMADelaide x NSS Academy.

The Academy gives emerging First Nations and multicultural artists a chance to hone their skills, guided by local and international music industry professionals during a 12 month program. Keep an eye out for Academy artists Elsy Wameyo, Sokel and Sonz of Serpent appearing this year on The Zoo and Moreton Bay Stages!

Fri 6.00–9.00pm, Sat 2.30–8.30pm, Sun & Mon 2.00–8.00pm,

TASTING AUSTRALIA

PRESENTED BY



29 APRIL—
8 MAY 2022

DISCOVER THE
FULL PROGRAM

TASTING
AUSTRALIA.COM.AU

EXPERIENCE
EVERY
FLAVOUR
OF SOUTH
AUSTRALIA.

TASTE THE WORLD

For over 18 years, Taste the World has celebrated the delicious food, fascinating cultures and moving stories from our artists' hearts and homelands.

Explore the world through your taste buds by sampling delicious global cuisine at the Taste the World sessions, presented in an exciting new location on the outdoor upper plaza of the Adelaide Botanic High School, hosted by local food legend Rosa Matto.

TIMETABLE

FRIDAY

- 6.00pm Carla Lippis' Mondo Psycho
- 8.00pm Grace Barbé

SATURDAY

- 1.30pm The New Monos
- 3.30pm Eishan Ensemble
- 5.30pm Joseph Tawadros
- 7.30pm L-FRESH The LION

SUNDAY

- 1.00pm Sorong Samarai
- 3.00pm Bush Gothic
- 5.00pm Parvyn
- 7.00pm Melbourne Ska Orchestra

MONDAY

- 1.00pm YID!
- 3.00pm ZÖJ
- 5.00pm Marlon x Rulla
- 7.00pm Motez

Proudly supported by

SALIFE



Taste the World Recipe

Prepared by
Pedram Layegh & Hamed Sadeghi

EISHAN ENSEMBLE



MIRZA GHASEMI WITH MASTO KHIAR

Ingredients

- 6 big eggplants
- 7 tomatoes
- 6 eggs
- 1 bulb garlic
- 1 can tomato paste
- 4 tablespoons turmeric
- 3 tablespoons black pepper
- 3 tablespoons salt
- 1 cup olive oil
- 2kg full cream Greek yogurt
- 6 Lebanese cucumbers
- 1 pack walnuts
- 1 pack dried raisins
- 1 pack dried mints
- 2 packs Lebanese bread

Instructions/Method

Grill the eggplants and tomatoes, peel them and smash them separately then set them aside.

In a large pot coated with 2 tablespoons olive oil, diced garlic and turmeric, cook on a medium high heat until brown on all sides. Add the smashed tomatoes and 4 tablespoons of tomato paste. Add salt and pepper and stir them. Crack the eggs and add them, wait until they are semi cooked and then stir it properly. Add the smashed eggplants, stir them and let them cook on a medium high heat for 15 minutes.

To make Masto Khiar, grate the cucumbers and add yogurt, walnut, dried raisin and mint. Mix them and stir them.

Serve the dish with bread and Masto Khiar on the side.



TAKSU

Shaped like a spiralling tunnel of 160 natural bamboo combs, TAKSU is a spectacular reminder of our connection to the natural world and one of its most regenerative resources. This spectacular, organic sculptural installation, created by HORSE in close collaboration with NSW bamboo artist Jaye Irving, the owner of Barefoot Design, is made from Australian-grown and harvested bamboo suspended from a steel frame to give the structure its floating shape.

Daily

STAY GROUNDED IN SOUTH AUSTRALIA

For more than 18 years, SALIFE has shared a deep connection to the people and places of South Australia.

Proudly written, produced and printed entirely on Kurna Land.

Our story has only just begun.



Find out more

salife.com.au



SALIFE



THE MEMORYOLOGIST

Slingsby Theatre Company

Everyone has a memory to treasure. *The Memoryologist's* team, collectors and custodians of memories, are searching for 'Memory Artulators' – people willing to contribute to the *Collection of All Human Memory*. Once collected, those memories, through the alchemy of art, may be transformed into something to be shared and experienced by others.

The Memoryologist invites you to share your favourite WOMADelaide memory from the past 30 years.

Fri 5.00–8.00pm. Sat, Sun & Mon 12 noon–2.00pm & 3.00–5.00pm



Greening Australia

The forests WOMADelaide built

For 15 years now, \$2 from every WOMADelaide ticket sold has been invested into planting native trees and shrubs in regional South Australia.

The unique, long-running partnership between Greening Australia and the WOMADelaide Foundation is about offsetting the festival's carbon emissions and tackling climate change – and it's also about restoring local landscapes for people and nature.

The WOMADelaide forests now cover over 85 hectares and, as they grow, storing carbon in their trunks, branches and roots, they are also providing food and shelter for our iconic wildlife.

In 2022, Greening Australia are partnering with the Hills and Fleurieu Landscape Board to bring the WOMADelaide forest to southern Fleurieu Peninsula, supporting the Back from the Brink Project.

With the offset funds, we plan to plant 17 hectares of shrubland and woodland heath to help the endangered Mount Lofty Ranges Chestnut-rumped Heathwren and the critically endangered Beautiful Firetail Finch (as well as many other local flora and fauna species).

Offsetting carbon and reducing our impact is globally important for tackling climate change – the WOMADelaide forests bring these actions home by helping out these unique Australian species too.

There'll be an opportunity for volunteers to help out with this year's planting. Come see us at our stall, or subscribe for updates to be the first to hear when registrations open: greeningaustralia.org.au/subscribe-for-updates



Photographer: David Cook (CC-BY-NC 2.0)



Want to hear more on the Back from the Brink Project?

Head to the Planet Talks Saturday 3.30pm to hear Luke Price from the Hills and Fleurieu Landscape Board.



WE CHANGE MINDS

The Australia Institute
South Australia

The Australia Institute is one of the country's most influential independent think tanks.

australiainstitute.org.au

The **Australia
Institute**
Research that matters.

THE PLANET TALKS

Generously supported by Claire Pfister and David Paradice.

In a time of disruption and damage, how can our relationship with the planet be restored, repaired, and reimagined?

Join us in the Frome Park Pavilion as The Planet Talks host a series of fascinating conversations between scientists, academics, activists, writers, journalists, artists, environmentalists and economists to explore everything from why our electric future will be awesome, to whether children should get the vote, how we can reshape the way our agricultural system works or why we should all be happy that insects outnumber us humans 20 million to one.

TIMETABLE

SATURDAY

- 1.30pm** Jane Goodall's Survival Guide for Troubled Times
- 3.30pm** The Wilderness Myth: How Humans Can Nurture Nature

SUNDAY

- 1.00pm** Electric Future Now
- 3.00pm** The Minefield: Should Children Get the Vote?

MONDAY

- 1.00pm** Bug Life: How Insects Rule our World
- 3.00pm** Climate Fighting Farming
- 5.00pm** Future Forward: Meet the Changemakers

Supported by



Media Partner

The Monthly
The Saturday Paper
7am



Saturday 12 March

1.30–2.30pm - Frome Park Pavilion

Jane Goodall's Survival Guide for Troubled Times (video)



speaker: Dr Jane Goodall

host: Natasha Mitchell

A conversation with one of the world's most influential conservationists.

Jane Goodall made discoveries that radically changed and enriched the field of primatology, and has worked for decades advocating to protect habitats and promote environmental education.

From a lifetime dedicated to nature, she shares her insights into how we find hope and strength in the face of the climate crisis.

Saturday 12 March

3.30–4.30pm - Frome Park Pavilion

The Wilderness Myth: How Humans Can Nurture Nature



speakers: Michael-Shawn Fletcher, Anita Nedosyko,
Martin Breed, Luke Price

host: Lee Constable

Human interactions with the environment aren't always a disaster. There's thousands of years of history of people working and shaping the Australian environment, and more efforts that ever today to restore ecosystems both marine and terrestrial.

But a healthy ecosystem doesn't have to mean untouched by humans. And healthy ecosystems lead to healthy people.

Sunday 13 March

1.00–2.00pm - Frome Park Pavilion

Electric Future Now



speakers: Richard Denniss, Renate Egan, Andrew Blakers

host: Nick Feik

Reducing our emissions by making everything electric won't just benefit the climate, it's going to be great for everyone. In the long run electrifying everything is cheaper and more efficient.

We can get to 80 per cent emissions reductions by 2035 and we don't need any new technology at all. So what are we waiting for?

Proudly presented by

**The Australia
Institute**
Research that matters.

Proudly supported by



Sunday 13 March

3.00–4.00pm - Frome Park Pavilion

The Minefield: Should Children Get the Vote?



speakers: Waleed Aly, Scott Stephens, Lisa Hill

RECORDED LIVE

If our current politics is failing our children, should they get a say in changing it?

After all, 16 and 17 years olds already pay taxes, work, drive, volunteer for political parties. Not that any of these are a pre-requisite for voting in Australia, so why exclude young people? Especially when the policy decisions made now will be felt for decades when it comes to things like energy, climate and the environment.

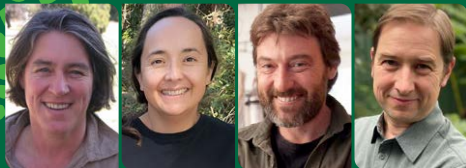
Proudly presented by

**The Australia
Institute**
Research that matters.

Monday 14 March

1.00–2.00pm - Frome Park Pavilion

Bug Life: How Insects Rule the World



speakers: Katja Hogendoorn, Rocio Ponce-Reyes, Richard Glatz

host: Michael Harvey

We might overlook them, but they outnumber us around 20 million to one. It's an insects' world and we're just living in it. Join our panel of experts to examine how much we rely on insects and how resilient they are in the face of catastrophic change.

Monday 14 March

3.00–4.00pm - Frome Park Pavilion

Climate Fighting Farming



speakers: Anika Molesworth, Bruce Pascoe, Charles Massy

host: Anthony James

How might regenerative agriculture change the way our food production system works, so that it's better for the soils, uses water more efficiently, captures carbon, emits less CO₂ and is still profitable for farmers?

Supported by



Monday 14 March

5.00-6.00pm - Frome Park Pavilion

Future Forward: Meet the Changemakers



speakers: Alex Bruhn, Amber Brock-Fabel, Pantju Nam, Amelia Chaplin, Tiahni Adamson

host: Keira Jenkins

What might a renewed relationship to the planet look like? What do we need to regenerate? Form anew? Bring again into existence?

We're joined by six young, engaged and passionate advocates for change who will share their stories about what we should be paying more attention to.



The future of the city is in all our hands.

Adelaide shares an ambition for a low carbon and circular economy.

This could mean:

- Active transport
- Electric vehicles powered by renewable electricity
- All electric buildings
- Sharing solar
- Recovering resources
- Reducing waste

City of Adelaide would like to hear about your priorities, projects and passions.

*Proudly supported by the
Nunn Dimos Foundation*



Scan here to contribute to what's next for a low carbon Adelaide.
[#CarbonNeutralADL](#)



BRING IT TO THE FESTIVAL



TAP WATER. A BETTER HABIT

Tap water is better for your health, your wallet, and the environment. Bring your own re-useable bottle while you're out and about, and form a better habit.



Donations to Food Bank can be made at Miss Isla or any WOMAD bar in exchange for a BYOB bottle.



Government of South Australia



HALCYON

TIM KOCH

Wondering what you're hearing once all the live sets have wrapped up? Every night the speakers will be playing a selection of soundscapes composed by Local Adelaide multi-instrumentalist Tim Koch! Over the course of his career, Tim Koch has released seven full length albums, each sonically exploring a diverse range of genre's and styles, which has led him to composing music for theatre, film, television advertisements and video games.

Nightly

GENERAL INFORMATION

Info Booth

The Info Booth will be open throughout the festival. Find general information, timetable changes, directions and arrange to meet your friends here.

Lost Children/ Missing Persons

WOMADelaide follows a strict lost child/missing persons procedure. All lost children/persons are taken to the Info Booth. Parents/guardians, please report a missing child/person at the Info Booth.

Sitting & Standing

To ensure the best visibility for our audience, only low beach chairs are permitted in the park.

Thanks to Keolis Downer, Take A Rest Accessible Seating offers patrons more room, ramp access and a great view of the Foundation Stage, Stage 2 and Stage 3.

Look for the 'Seated Audience' signs, check the schedule and listen for the MC announcements.

Child Wristbands

All children must be wrist banded prior to entering the Festival.

Write the responsible adult's name AND mobile number clearly on the wristband. Parents or guardians should arrange with children to meet at the Info Booth if they get separated.

Lost Property

Please report any lost property to the Info Booth. If you find any valuables please hand in to the Info Booth.

After 15 March, please call 08 8271 1488.

Look After the Park

Botanic Park is the 'green heart' of Adelaide – 34 hectares of century old trees, vast lawns and endangered flora. WOMADelaide is in the enviable position of having the privilege to stage the festival on these grounds.

Please do not climb on the trees, hang anything from the branches or damage other flora.

Cloak Room

Cloak rooms are located at the two main entrances at Frome Rd and Hackney Rd. Use the cloak room Tap 'n' Go donation, with all proceeds to Foodbank Australia. The cloak room will close at 12.30am nightly. All items are left at your own risk. WOMADelaide takes no responsibility for items left behind.

WHAT YOU CAN CHECK IN

- Handbags, small bags or daypacks

WHAT YOU CAN'T CHECK IN

- Valuables (wallets/purses, phones, cameras, signed Peter Gabriel vinyl)
- Coats/jumpers or loose items of clothing
- Prams/strollers
- Open bags (e.g. shopping bags)
- Tents and blankets

We're Smoke Free

Smoking Policy

WOMADelaide is a SMOKE FREE event and this includes E-cigarettes. Festival goers wishing to smoke will be able to do so in the designated smoking areas marked on the map near the Frome and Hackney Rd entrances. Please ensure you dispose of your cigarette butts appropriately in the butt bins provided in these areas.

St John Ambulance

St John Ambulance and first aid are located between the Foundation Stage and Stage 2.

Become a Better Breather

To learn more about asthma visit TerryWhite Chemmart located between the Foundation Stage and Stage 2, or go to asthmaaustralia.org.au or call the 1800 ASTHMA Helpline (1800 278 462).





cover the basics.

Every South Australian should be able to access life's basics.

As the 2022 SA State Election approaches, find out what our leaders need to commit to: www.sacoss.org.au/basics

Authorised by R. Womersley, for the South Australian Council of Social Service, 47 King William Road, Unley SA 5061



Contribute to the future of WOMADelaide

You don't have to be a billionaire to be a philanthropist. Anyone can be a WOMAD donor! You can help your favourite festival thrive into the future through a fully tax-deductible donation to the WOMADelaide Foundation, the non-profit entity that presents the festival.

All donations enable us to continue to present and commission the ambitious and culturally significant work we're famous for.

We can't thank you enough for purchasing tickets to WOMADelaide and if you want to contribute more to our future, we welcome any donations large or small!

To make a tax deductible donation, please visit womadelaide.com.au/about/support-us

Or email donations@womadelaide.com.au for further information on how you can support us.

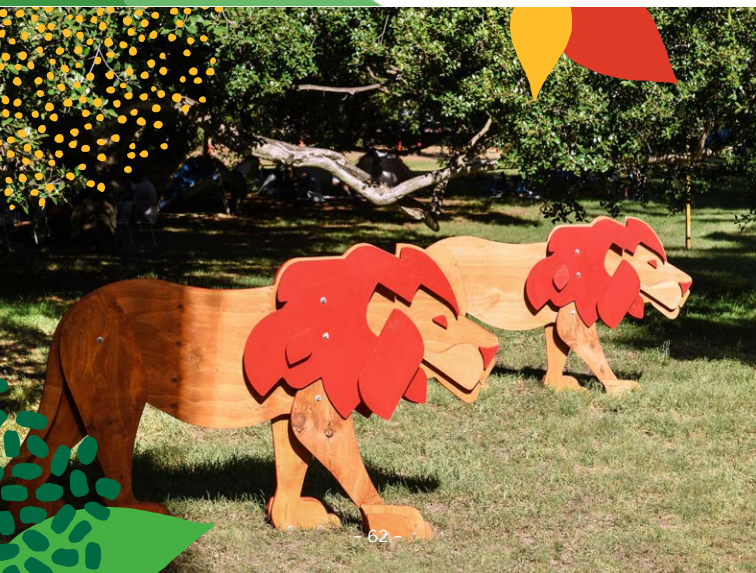




Proudly supporting WOMAdelaide 2022



www.humanihut.com
sales@humanihut.com



THANK YOU

PRINCIPAL PARTNER



Restart Investment to Sustain and Expand (RISE) Fund - an Australian Government initiative

PRESENTING PARTNER



EVENT MANAGED BY



PRODUCED BY



CREATIVE PARTNERS



KEY PARTNERS



PRODUCTION PARTNER



ACCESSIBILITY PARTNER



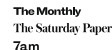
COMMUNITY PARTNER



PARTNERS



MEDIA PARTNERS



MEDIA SUPPORTERS



DONORS

A special thank you to our donors for the 2022 festival: Hackett Foundation, Paradise Family Foundation, Nunn Dimos Foundation, J Phillips, N Prime, I Scobie.

Produced and presented by the WOMAdelaide Foundation and managed by Arts Projects Australia (artsprojectsaustralia.com.au) and WOMAD Ltd (womad.org). Presented in association with the Government of South Australia. WOMAdelaide is proud to be a part of the 2022 Adelaide Festival.

Details correct at time of printing. WOMAdelaide reserves the right to change the program without notice.

GIRL FROM THE NORTH & COUNTRY

Written and Directed by

CONOR MCPHERSON

Music and Lyrics by

BOB DYLAN



**25 MARCH – 10 APRIL
HER MAJESTY'S THEATRE**

NORTHCOUNTRY.COM.AU