

2006

MARCH 10-12

botanic park

ADELAIDE

HIGHLIGHTS PROGRAM

womadelaide
SOUNDS OF THE PLANET

www.womadelaide.com.au

* * * * *
 “As an ocean
 of colour,
 movement
 and amazing
 sounds,
 WOMADelaide
 delivers.”

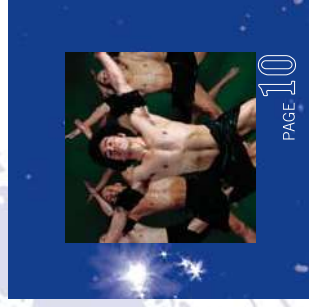
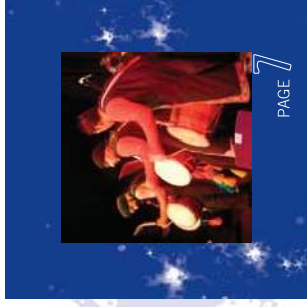


Have you discovered WOMADelaide yet?

SINCE 1992, WOMADELAIDE HAS
 CHANGED AND GROWN EACH YEAR,
 BUT THE ORIGINAL SENSE OF MAGIC
 REMAINS. JOIN US FOR 3
 DAYS AND NIGHTS OF
 HEAVENLY MUSIC.



* More than 300 artists from around the globe – including Trinidad, India, UK, Canada, Scotland, Jamaica and Australia - perform on six stages in the magnificent Botanic Park. * The Park is a wonder in itself and is surely the world's most magnificent festival setting, with its shady, hundred year old trees and vast expanses of lush lawns. * And in addition to the sensational music, there are roving performances, workshops, visual arts, KidZone, a Global Village with more than 100 display, craft and mouth-watering food and so much more - you and your family will have an unforgettable experience. * WOMADelaide's unique and friendly ambience combine with its message of cultural discovery has made it one of the nation's most popular and successful festivals. * **Don't miss the excitement of WOMADelaide - everyone is welcome!**



“His amazing vocal gifts and songwriting talents put him on top of the reggae heap.”

ROLLING STONE

JAMAICA

Travelling a long road from audacious teenage star to ‘ambassador’, Cliff worked alongside Bob Marley to mould the future of reggae music. Twenty-two albums later, the actor/singer is revered for both his easy style and his harder edged political tunes, including the classic *You Can Get It If You Really Want*.

EVELYN Glennie

A pioneer of solo percussion, Glennie’s astonishing musicality and visual flair has seen her perform with the finest orchestras and at festivals across the world. Awarded an OBE in 1983, she has composed for film and television, and released more than 20 CDs that continue to break new ground.



SCOTLAND

“Evelyn Glennie’s charisma is easy to take for granted, but should not be. She is magnificent.”

THE TELEGRAPH (UK)

“Brash,
bouncy,
brilliant and
beautiful.”

FOLKMUSIC.NET



LA BOTTINE Souriante

First appearing on the Quebec music scene in 1976, La Bottine Souriante are still considered to be the tightest and most exciting French Canadian roots band. They successfully pay homage to tradition, with a dash of jazz, salsa and pure folk, all the while ‘reeling’ in their audiences with their exceptional vitality.

CANADA

SUPPORTED BY
Canada Council
for the Arts
Conseil des Arts
du Canada

6

THE Dhol FOUNDATION

UK/INDIA

“Technofied,
groove-intensive
Asian crossover
sounds for the

’00s.”

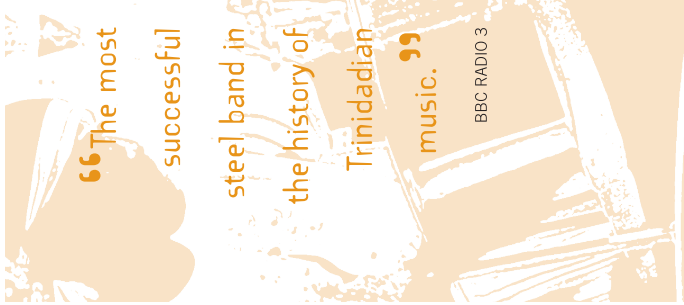
AMAZON.COM



Founded and led by the charismatic drummer from Afro Celts, Johnny Kalsi, the Foundation uses beats found in bhangra, which has its roots in wedding music and harvest celebrations from the Punjab in North Western India. At full throttle, they are a powerhouse of percussion!

SUPPORTED BY
BRITISH COUNCIL
Australia





“The most successful

steel band in the history of

Trinidadian music.”

BBC RADIO 3



TRINIDAD & TOBAGO

Renegades STEEL ORCHESTRA



The greatest and most successful steel band in the world, the Renegades were originally formed in World War II. Tremendously energetic live, the 16 piece group's island flavoured calypso and merengue rhythms will have everyone on their feet!

SHARON Shannon

The 'Queen of the Squeezebox', Shannon has collaborated with artists as diverse as Sinéad O'Connor and Nigel Kennedy. For WOMADelaide, she will be joined by a superb trio of the finest interpreters of Celtic music.



& FRIENDS



IRELAND/ ENGLAND

“You don't have to be a fan of Celtic music to appreciate the command of Sharon Shannon.”

FOLK & ACOUSTIC MUSIC
EXCHANGE

BY ARRANGEMENT WITH
SEAMUS FINNEREN



“These men could drum a fierce, happy tattoo
into the thickest of skins.”

NEWSDAY

Black Grace DANCE COMPANY

* * * * *

**NEW
ZEALAND**

This predominantly Pacific Island and Maori all-male contemporary dance company have thrilled audiences everywhere with their super-athleticism, and their innovative incorporation of traditional songs into their shows.

10

BA Cissoko

With feet firmly grounded in age-old traditions and eyes steadfastly fixed on new musical horizons, this young, talented quartet blend the ancient and delicately entrancing sound of the kora with a well-built reggae-rock foundation.



* * * * *

GUINEA

“The wild, souped-up electric kora alongside the lush otherworldliness of a second, acoustic kora is striking.”

THE JAPAN TIMES

BY ARRANGEMENT WITH
TOP SHELF

11

“Melting away
the borders
between East
and West.”

HARPERS BAZAAR



Talvin SINGH

Don't miss this one-off DJ set of atmospheric "tablatronica", fusing Indian bhangra and classical music with electronica and the sounds of the 'Asian underground'. While the award-winning Singh has inspired a host of imitators, he remains the genius creator of the genre.

UK/INDIA

BY ARRANGEMENT WITH
THE ADELAIDE BANK
FESTIVAL OF ARTS

12

Saltwater BAND

From the remote Elcho Island in North East Arnhem Land, Saltwater's distinctly ska influenced songs harmoniously blend ancient Aboriginal and contemporary sounds to reflect their ties to the land and sea.



* * * * *

AUSTRALIA

“Australia's

hottest indigenous

act ...nothing

short of spine
tingling.”

DARWIN FESTIVAL REVIEW

13

“ A unique and potent blend of blues virtuosity and passionate local sensitivity.”

SYDNEY MORNING HERALD

* * * * *

AUSTRALIA



Jeff LANG

A virtuoso of the lap steel, acoustic and electric guitar, Lang never fails to take the instrument into new territory. A rare musical talent, his original songs are raw and poetic.

DOCH

DOCH's young musicians play vibrant gypsy music with exuberance and passion, whipping out slow-burning melodies, screaming solos and furious tempos to rouse people of all ages into a dancing frenzy.



TIME OFF

AUSTRALIA

“Doch work the crowd and the crowd loves them for it”

* * * * *

“Enough words.

WOMADelaide has reached musical perfection.”

PAUL LLOYD,
THE ADVERTISER



SITEArtists



Angus Watt's stunning silk flags, new twinkling installations by Lush Lighting and the UK's Dream Engine presenting the unbelievable "Heliosphere" and "Conedancers", Avanti Display's "Spurting Man", plus a host of street theatre artists, exhibitions and special projects.

DREAM ENGINE
SUPPORTED BY
BRITISH COUNCIL
Australia

The WOMADELAIDE Foundation Ltd

is a non-profit body established to present the annual WOMADelaide festival, and to foster and develop longterm educational activities and cultural exchange through the festival program. It is listed on the Commonwealth Government's Register of Cultural Organisations (ROCO), enabling any donations made to the Foundation's Donations Fund to be fully tax deductible.

The Foundation has identified as one of its main goals a desire to focus on and develop art and cultural projects with indigenous artists. To this end, it has developed a relationship with the Yothu Yindi Foundation (YYF), the presenter of the annual, traditional Aboriginal cultural event held in Gulkula in Arnhem Land each August (for info see www.garma.telstra.com.au).

The WOMADelaide Foundation, the YYF and community members from North East Arnhem Land, are working together to be able to present performances at WOMADelaide 2006 by up to 20 songmen, dancers and musicians. To make your donation towards this and other Foundation projects, visit www.womadelaide.com.au



FOR School Students

An international WOMADelaide artist will lead two workshops, one for primary and one for high school classes, on the morning of Thursday 9 March.

To register their interest and receive further information in the new year, teachers can email apadmin@artsprojects.com.au putting 'schools workshops' in the header.



Workshops

Celebrating the fact that sometimes the best moments at the festival are the quieter ones, the new Speakers Corner will become the hub of the artist workshops program. Catch an "In Conversation with ..." session, learn about the artists' musical history, interact with them by becoming their rhythm section or choir – just join in!

KidZone

With 1,000's of under 12s in the Park each festival, KidZone offers younger kids free face painting by AddFaces, Fleurieu Fun Bouncers, storytelling inside Evelyn Roth's inflatable Nylon Zoo, a mini carousel and performances by the Amazing Drumming Monkeys.



Full artist line-up and schedule out January 2006



For all ages, there's also a brilliant range of workshops presented in association with Carclew Youth Arts Centre, plus workshops for the Sunday evening Parade, led by artists Amanda King & Sue Davis. The Ashanti (Ghanaian) themed Parade will feature red, green, lots of gold, stiltwalkers and percussionists.

“The world may be a smaller place, but those who sat and listened to the world’s musical bounty are richer for the experience.”

DAVID SLY
THE ADELAIDE REVIEW



Global VILLAGE

Satisfy your every eating and drinking urge at WOMADelaide, with more than 40 international food stalls and three bars, and plenty of space and shade to relax in. And shop til you drop, as you browse 60 amazing crafts and display stalls, and the merchandise and CD stores (ATMs handy!)

Travelworld Geelong are WOMADelaide travel specialists. For travel, accommodation and ticket packages call 1800 632 788 or check 'Events' at www.travelworldgeelong.com

For general accommodation options check the WOMADelaide website or contact the South Australian Travel Centre on 1300 366 770 or www.southaustralia.com.au



GETTING HERE IS easy!

“A considered blend of intimate performances and crowd-shaking sessions ...”

MICHAEL ROFE
THE AUSTRALIAN

Tickets

**BOOK AT ALL
VENUE *TIX
AND SELECTED
NATIONAL
AUSTRALIA
POST OUTLETS
1300 30 40 72**



Don't miss Australia's
greatest celebration of
the World Of Music, Arts
& Dance!

Gates open at 4.30pm on Friday and
11am on Saturday and Sunday.

Performances are on:

FRIDAY 10 MARCH

6pm to 12 midnight

SATURDAY 11 MARCH

12noon to 12 midnight

SUNDAY 12 MARCH

12noon to 11pm

ALL PRICES INCLUDE
BOOKING FEES AND GST.

WOMADELAIDE RESERVES
THE RIGHT TO CHANGE
THE PROGRAM WITHOUT
NOTICE. FULL LINE-UP
AND SCHEDULE OUT IN
JANUARY.

ALL DETAILS CORRECT AT
THE TIME OF PRINTING.

22



NEW!! 3 DAY PASS

Buy 3 separate passes for
3 days and save \$50.

- * 1 x Friday night
- * 1 x Saturday day + night
- * 1 x Sunday day + night

Adults \$220

Friends of the Adelaide

Festival / Groups

(10 OR MORE) \$184

Concession \$165

(STUDENT / PENSIONER /

UNEMPLOYED)

- * Children under 12 admitted
free when accompanied by
an adult.

- * Please note that single
session tickets are available
when the full program is
released in January.

- * 3 Day Pass not available at
the gate.



WEEKEND PASS

- * 1 x Non-Transferable
Weekend Pass: Friday +
Saturday + Sunday

Adults \$172

Friends of the Adelaide

Festival / Groups

(10 OR MORE) \$149

Concession \$125

(STUDENT / PENSIONER /
UNEMPLOYED)

More info available at

www.womadelaide.com.au

- * * * * *

WOMADELAIDE supports
healthy choices. Smoke Free
applies to all food service
areas, defined food

consumption areas within the
Global Village, KidZone and
defined viewing areas in front
of all stages.

we're smoke-free

23



www.womadelaide.com.au

www.womad.org

Produced and presented by the WOMADelaide Foundation and managed by Arts Projects Australia and WOMAD Ltd.



www.artsprojectsaustralia.com.au

Presented in association with the Government of South Australia.

Sponsored by



Government of South Australia



Major Sponsor



Corporate Sponsors



Sponsors



With thanks to



Presented as part of the Adelaide Bank Festival of Arts



Graphic Design *Katrina Allan* Web Site *Cosmonaut Web Factory*